

1 RULES

- 1.1 The regatta will be governed by the rules as defined in The Racing Rules of Sailing.
1.2 If there is a conflict between languages the English text will take precedence.

2 ADVERTISING

- 2.2 Boats may be required to display advertising chosen and supplied by the organizing authority.

3 ELIGIBILITY AND ENTRY

- 3.1 The regatta is open to all boats of the F18 class.
3.2 Eligible boats may enter by sending an email before **14.5 at 9.00** to silenbrothers@gmail.com with:
Skipper name, Crew name, and Sail number
and
paying the registration fee of **60€** to
FI21 1020 3000 1384 10
Finnish Formula 18 Association Ry
with the reference: **"Season opener + sail number"**

4 Required fees are as follows:

F18: 60€

7 SCHEDULE

7.1 Registration will be through email to silenbrothers@gmail.com and open until 14.5 at 9.00. No physical registration at the regatta venue is required. Skippers meeting will be held at HSK at 9.30.

7.2 Dates of racing: The regatta will consist of 1 day of racing on the 14.5

7.3 Number of races:

Class	total races	per day
F18	6	6

The aim is to conduct approximately 6 races in one day. The number of races can be extended by a maximum of 3 races. The racing committee will display a signal at the finish of the last race to mark the return to the harbor.

7.4 The scheduled time of the warning signal for the first race is 11.00.

9 SAILING INSTRUCTIONS

The sailing instructions will be available after 17.00 on 13.5 through F18 associations information channels.

10 VENUE

HSK (Helsingfors Segelklubb) will serve as the regatta harbor.

10.1 Races will be held on the racing area C between Pihlajaluoto and Suomenlinna. Racing area D, south of Melkki will serve as a backup racing area.

Attachment A shows the location of the racing areas.

11 THE COURSES

The course sailed will be a windward-leeward course with either 2, 3 or 4 laps.

The number of laps sailed will be signaled by number flags at the race committee.

Attachment B shows the illustration of the course and which side each mark is to be passed.

12 PENALTY SYSTEM

12.1 RRS 44.1 is changed so that the Two-Turns Penalty is replaced by the One-Turn Penalty.

13 SCORING

13.3 When fewer than 4 races have been completed, a boat's series score will be the total of her race scores. When 4 or more races have been completed, a boat's series score will be the total of her race scores excluding her worst score.

20 DISCLAIMER OF LIABILITY

Competitors participate in the regatta entirely at their own risk. See RRS 4, Decision to Race. The organizing authority will not accept any liability for material damage or personal injury or death sustained in conjunction with or prior to, during, or after the regatta.

Insert the currency and amount.

21 INSURANCE

Each participating boat shall be insured with valid third-party liability insurance.

22 FURTHER INFORMATION

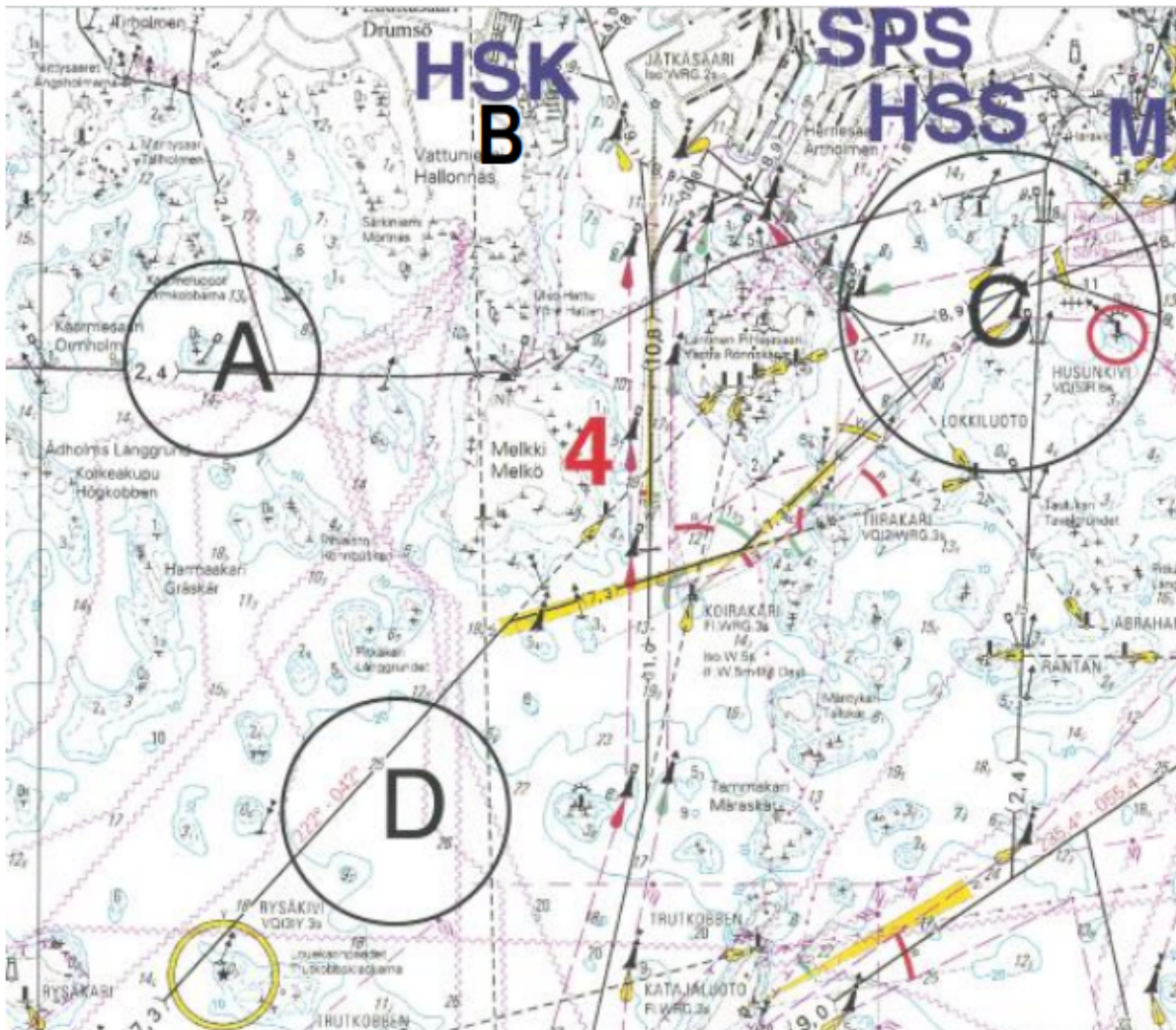
For further information please contact silenbrothers@gmail.com

Attachment A

Course areas

Primary racing area C

Reserve area D



Course diagram

